







FACT SHEET 2008 – 2009 (as at 02.10.2008)

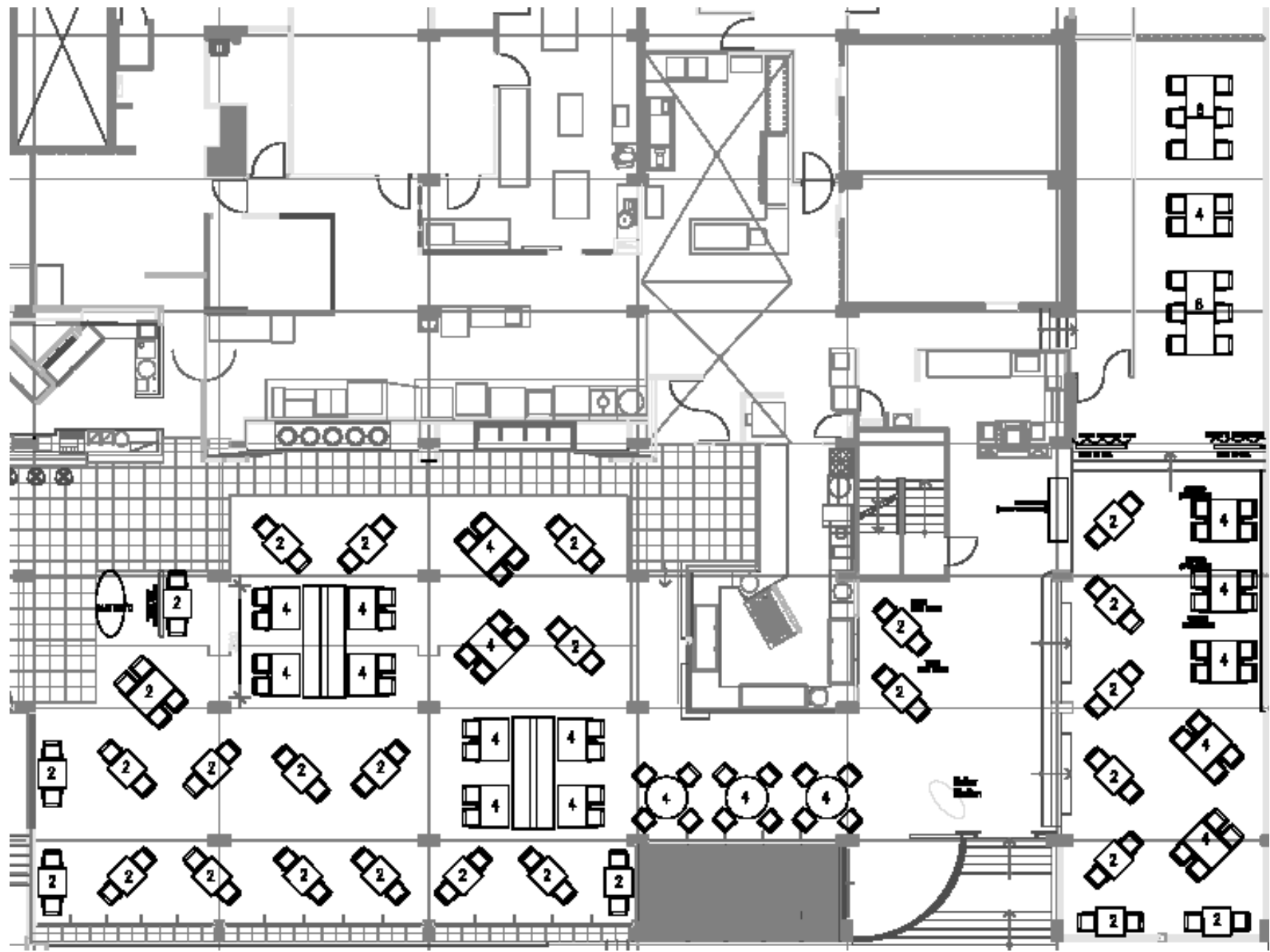
| | | | |
|---|---|----------|--|
| THEME | Bushfire Flame Grill is the most unique and exciting dining experience in Cairns. A sophisticated, modern Australian ambience offering the highest quality cuisine and service. | | |
| CULINARY CONCEPT | The Thrill of the Grill - fresh local and other unique Australian ingredients featuring: the best beef - and freshest fish available in Australia - wild pepper, Gagarra honey, lemon myrtle, sugar cane, bush tomatoes. | | |
| SIGNATURE DISH | <p><u>Churrasco – Brazilian inspired, Australian style BBQ.</u> Meter long skewers of succulent Australian beef, pork, lamb, ribs and chicken are gently roasted on the Churrasco Grill and served directly onto your plate at your table. Waiters will circle your table with the skewers until you are fully satisfied, - as they call it in Brazil “rodizio” = as much as you can eat. Accompanying dishes of baked chat potatoes, broccoli mornay, Brazilian inspired salad with carotino vinaigrette and sauces to complement are placed in the centre of your table.</p> | | |
| | ** Items on the menu subject to seasonal availability, and all items subject to change without notice | | |
| HOURS OF OPERATION | Breakfast (continental and fully cooked breakfast buffet) 6.00am - 10.00 am Dinner: 6.00pm - 11.00 pm (kitchen closes 10pm) | | |
| CLOSED | Not open for lunch. Light meals / snacks and tapas available at Sugarcane Rhubar | | |
| SPECIAL PROMOTIONS | ** Christmas Day – Buffet Dinner only (no Churrasco) ** New Years Eve – special New Years Eve menu (no a la carte) - please find attached detailed information | | |
| SEATING CAPACITY | MAIN DINING: 80 MEZZANINE: 50 (includes semi private dining room / maximum capacity 20 – on application) DISPLAY KITCHEN: 16 | | |
| MAXIMUM GROUP SIZE | 30 persons (per table) - group bookings must be pre arranged | | |
| MINIMUM GROUP SIZE | 6 persons | | |
| EARLY BIRD | Seated between 6.00 pm & 6.30pm Out by 7.30pm | Children | Age 3-12 yrs. Inclusive : 50% off meals |
| ADDRESS | Pacific International Hotel 43 Esplanade Cairns, Queensland, Australia | | Email: restaurantbookings@pacifichotelcairns.com Website: www.bushfirecairns.com |
| CONTACT DETAILS | Bushfire Restaurant: Phone: (61) 07 4044 1879 , Fax: 61 7 4031 1445, dos@bushfirecairns.com | | |
| FLOOR PLAN | (see attached) | | |
| MENU OPTIONS (copy of menu available on application) | <ul style="list-style-type: none"> ○ Fire Starters (entrees) ○ Churrasco experience ○ The Thrill of the Grill featuring best beef ○ Volcanic Hot Rock Steaks (Ishiyaki) ○ Freshest fish, seafood & pasta ○ Vegetarian ○ Unique Desserts (Australian ingredients) | | |



| | | | | | |
|----------------------------|---|--|---|---|---|
| THEME | Sugarcane Rhumbar - guests enjoy an eclectic / diverse experience. Everyday cocktails are not the norm at Sugarcane - we've created a unique selection of drinks using native ingredients including local, rare tropical fruits. | | | | |
| DRINK CONCEPT | Nowhere else in Cairns will you experience the flavours and mixtures of bush ingredients — the very best in Australia. Bartenders create and serve a unique selection of drinks using local and regional ingredients featuring: rare tropical fruits - indigenous varieties such as quandong, peach, wild rosella, native lime, guava and mangosteen. | | | | |
| SIGNATURE DRINK | Hibiscus Blossom – finest Australian sparkling wine and wild Australian Hibiscus flower in raspberry syrup. The flower sits in the bottom of the glass. All the bubbles stream off and slowly open up the flower. At the end of the drink, you can eat the flower. | | | | |
| HOURS OF OPERATION | Daily: 5.00pm – 11.00pm (Lounge open for light snacks during the day) | | | | |
| CLOSED | We never close but restricted hours on some public holidays including Anzac Day (25 April), Christmas Day (25 December) | | | | |
| SPECIAL PROMOTIONS | Live music – Friday & Saturday nights from 7pm New Years Eve – open till 1am | | | | |
| SEATING CAPACITY | BAR: 42 | | | | |
| MAXIMUM GROUP SIZE | On application | | | | |
| MINIMUM GROUP SIZE | N/A | | | | |
| ADDRESS | Pacific International Hotel 43 Esplanade Cairns, Queensland, Australia | Email: restaurantbookings@pacifichotelcairns.com Website: www.bushfirecairns.com | | | |
| CONTACT DETAILS | Bushfire Restaurant & Sugarcane Rhumbar Phone: (61) 07 4044 1879 Fax: 61 7 4031 1445 dos@bushfirecairns.com | | | | |
| FLOOR PLAN | (see attached) | | | | |
| Images for Download | Images can be downloaded straight from our website (www.pacifichotelcairns.com) if you go into our "gallery" page where you will find an "enter media library" button - the login is "pacific" and the password "images08" - there is a range of high and low res images. | | | | |
| MENU OPTIONS | Snack / Light meal menu available all day Coffee selection Dessert List Tapas Selection from 5.30pm to 10pm Cocktails with Real Australian Personality Selection of Australian wines Selection of Australian rums, spirits, liqueurs |  |  |  |  |

Restaurant Hours & Services during Christmas / Festive Season

| | | | |
|---|---------------------------|--|---|
| Wednesday December 24 (Christmas Eve) | Breakfast Dinner | Normal | |
| Thursday December 25 th Christmas Day | Bushfire Breakfast | Normal Operations | 15% Surcharge applicable on all prices |
| | Sugarcane Bar (10am-6pm) | Normal Operations | 15% Surcharge applicable on all prices |
| | Room Service | Normal Operations | 15% Surcharge applicable on all prices |
| | Bushfire/Sugarcane Dinner | Open from 6pm – last meal order taken 9pm. Xmas Buffet Only No a la carte, no churrasco, no coupon menu AD \$85.00 CH. \$42.50 (4-12yrs) under 4yrs no charge | No surcharge on Buffet price 15% Surcharge applicable on all Beverage Prices Xmas Buffet Menu available |
| Friday December 26 th Boxing Day | Bushfire Breakfast | Normal Operations | 15% Surcharge applicable on all prices |
| | Sugarcane Bar (10am-6pm) | Normal Operations – Bar closed, but lounge open for all day snacks & beverages (normal lounge menu) | 15% Surcharge applicable on all prices |
| | Room Service | Normal Operations | 15% Surcharge applicable on all prices |
| | Bushfire/Sugarcane Dinner | Open from 6pm – last meal order taken 9.00pm Reduced Menu offering, No a la carte Japanese coupon menus honoured Churrasco Experience – 2 options: Basic Churrasco Only: \$45.00 p/p. Tapas & Churrasco optioni \$55 p/p. Dessert Menu available: \$13.00 per dessert | 15% Surcharge applicable on all prices Menu Available with further info. |
| Wednesday December 31 New Years Eve | Bushfire Breakfast | Normal Operations | |
| | Sugarcane Bar (10am-6pm) | Normal Operations | |
| | Room Service | Normal Operations | |
| | Bushfire/Sugarcane Dinner | Open from 6pm – last meal order taken 10 pm. Reduced Menu offering No a la carte Japanese meal coupons honoured Churrasco Experience – 2 options: Basic Churrasco Only: \$45.00 p/p. Tapas & Churrasco optioni \$55 p/p. Dessert Menu available: \$13.00 per dessert | Menu Available with further info. |
| Thursday January 1 st New years Day | Bushfire Breakfast | Extended Operations Buffet to remain open till 10.30 am | 15% surcharge applicable on all prices |
| | Sugarcane Bar (10am-6pm) | Normal Operations. Bar closed but open for all day snacks & beverages (normal lounge menu) | 15% surcharge applicable on all prices |
| | Room Service | Normal Operations | 15% surcharge applicable on all prices |
| | Bushfire/Sugarcane Dinner | Open from 6pm – last meal orders taken 9pm Reduced Menu offering No a la carte Japanese meal coupons honoured Churrasco Experience – 2 options: Basic Churrasco Only: \$45.00 p/p. Tapas & Churrasco optioni \$55 p/p. Dessert Menu available: \$13.00 per dessert | 15% Surcharge applicable on all prices Menu Available with further info |

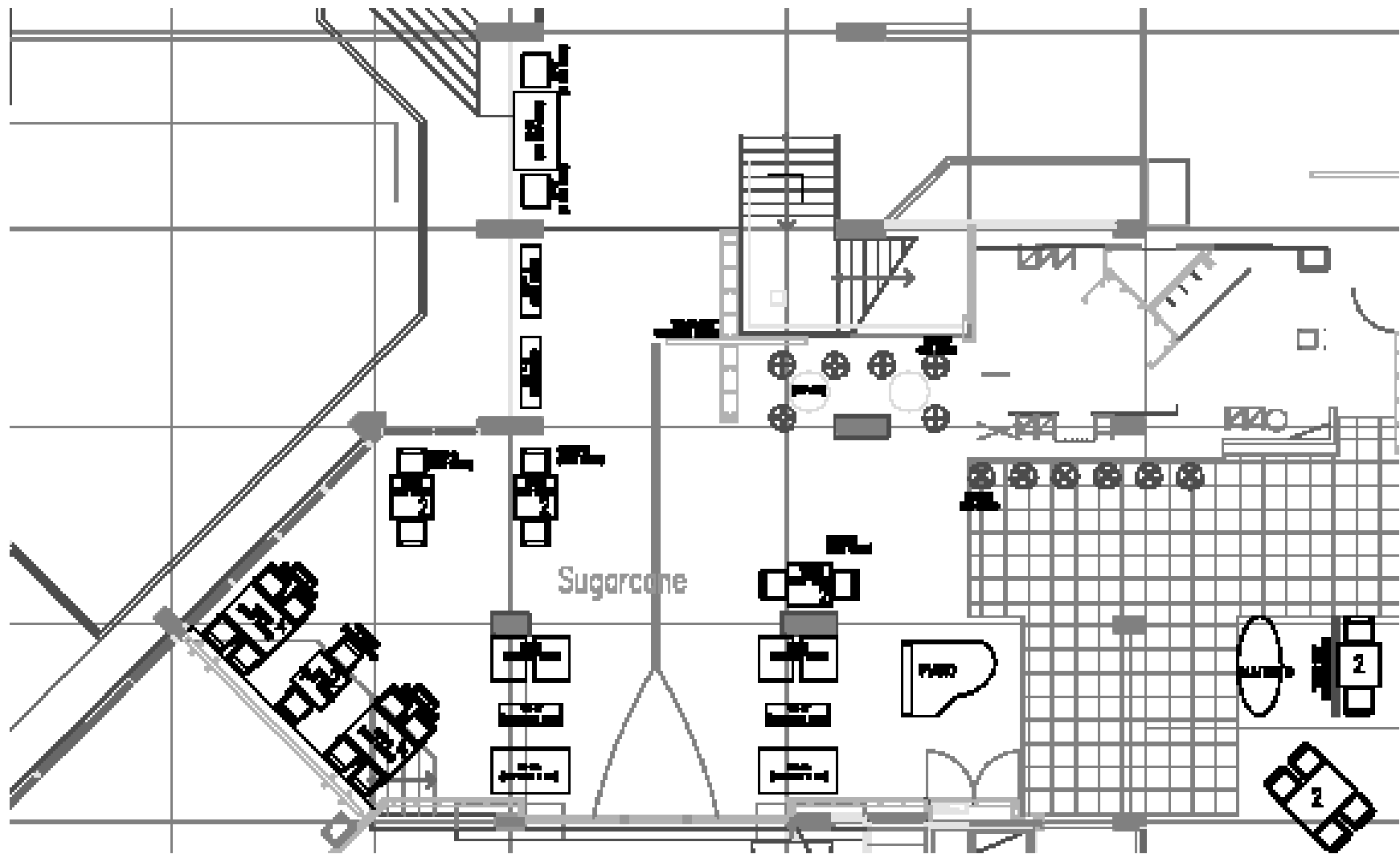


MAIN DINING: 80

DISPLAY KITCHEN: 16

MEZZANINE: 50

BUSHFIRE SEATING PLAN



SEATING CAPACITY: 42

SUGARCANE RHUBARB SEATING PLAN